

CHAT



CHAT GPT

**REVIEW OF ARTIFICIAL INTELLIGENCE IN
EDUCATION | E-ISSN: 2965-4688**

Alumni.in

**SUBMITTED ON AUGUST 01, 2024.
APPROVED ON SEPTEMBER 10, 2024.
VOLUME 5 (2024).**

VOLUME 5 (2024)

**GPT ALUMNI AI PESQUISA: TUTORIAL
PRÁTICO PARA A ADOÇÃO E USO ÉTICO
DA IA EM PESQUISA CIENTÍFICA**

*GPT ALUMNI AI PESQUISA: A PRACTICAL
TUTORIAL FOR THE ADOPTION AND ETHICAL USE
OF AI IN SCIENTIFIC RESEARCH*

how to cite:



Silva, A. de O., Janes, D. dos S., & Santos, R. (2024). GPT Alumni AI Pesquisa: A Practical Tutorial for the Adoption and Ethical Use of AI in Scientific Research. *Review of Artificial Intelligence in Education*, 5(00), e033. <https://doi.org/10.37497/rev.artif.intell.educ.v5i00.33>

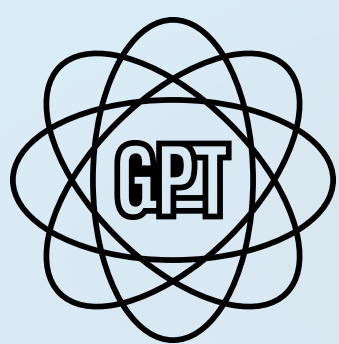
ABSTRACT

Objective: This tutorial introduces the use of Alumni AI Pesquisa, a chatbot based on GPT-4, publicly available on the OpenAI platform, designed to support the ethical and transparent use of Artificial Intelligence (AI) in academic research. The aim is to guide authors, editors, and reviewers in the responsible application of AI, ensuring scientific integrity throughout the editorial process.

Method: The tutorial provides a step-by-step guide on how to access and utilize Alumni AI Pesquisa. The GPT-4 offers guidance on the ethical use of AI in academic writing, the oversight of editorial decisions assisted by AI, as well as compliance with editorial guidelines and manuscript formatting. Correct usage of AI is promoted through practical examples and references to global best practices.

Results: Alumni AI Pesquisa provides immediate support tailored to different user profiles (authors, editors, and reviewers), encouraging transparent AI use in manuscripts. The tool ensures that AI-assisted decisions are validated by human supervisors, guaranteeing adherence to ethical and technical standards.

Conclusions: Publicly available on the OpenAI platform, Alumni AI Pesquisa, powered by GPT-4, significantly contributes to the promotion of scientific integrity by facilitating responsible AI use in the academic environment. It is recommended that the use of the tool be cited in publications, explicitly mentioning the version (GPT-4).



Keywords: *Artificial Intelligence, GPT-4, Research Ethics, Academic Publications, Editorial Support.*



RESUMO

Objetivo: Apresentar a utilização do GPT Alumni AI Pesquisa, um chatbot baseado no GPT-4, disponível publicamente na plataforma OpenAI, para apoiar o uso ético e transparente da Inteligência Artificial (IA) em pesquisas acadêmicas. O objetivo é orientar autores, editores e revisores sobre como empregar IA de forma responsável, garantindo a integridade científica em todo o processo editorial.

Método: O tutorial segue um formato passo a passo, explicando como acessar o Alumni AI Pesquisa e utilizar suas funcionalidades. O GPT-4 orienta sobre a aplicação ética de IA na escrita acadêmica, a supervisão de decisões editoriais assistidas por IA, além de conformidade com diretrizes editoriais e formatação de manuscritos. O uso correto de IA é incentivado por meio de exemplos práticos e referências a boas práticas globais.

Resultados: O Alumni AI Pesquisa oferece suporte imediato para diferentes perfis de usuários (autores, editores e revisores), promovendo o uso transparente de IA em manuscritos. A ferramenta permite que decisões assistidas por IA sejam validadas por supervisores humanos, assegurando a conformidade com padrões éticos e técnicos.

Conclusões: Disponível publicamente na plataforma OpenAI, o Alumni AI Pesquisa baseado no GPT-4 contribui para a promoção da integridade científica, facilitando o uso responsável de IA no ambiente acadêmico. Recomenda-se que o uso da ferramenta seja citado em publicações, mencionando sua versão (GPT-4).



Palavras-chave: *Inteligência Artificial, GPT-4, Ética em Pesquisa, Publicações Acadêmicas, Suporte Editorial.*





ALTIERES DE OLIVEIRA SILVA



EDITORA ALUMNI IN (São Paulo).

Doutorando em Direito Empresarial e Cidadania pela UNICURITIBA, com certificação em Publicação Científica pela *Cambridge University*. Especialista em periódicos científicos de acesso aberto e na promoção de práticas editoriais eficazes e acessíveis.



DIEGO DOS SANTOS JANES



EDITORA ALUMNI IN (São Paulo).

Possui bacharelado em Administração de Empresas pela UNINOVE e especialização em Governança Corporativa. Tem ampla experiência em Publicações Científicas de Acesso Aberto, Comunicação Científica e Gestão Editorial, com foco na promoção da acessibilidade ao conhecimento científico.



RENAN DOS SANTOS



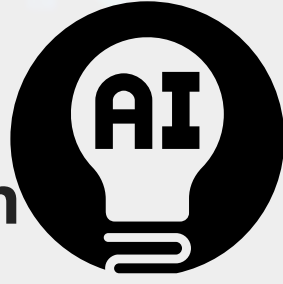
EDITORA ALUMNI IN (São Paulo).

Especialista em Publicações Científicas de Acesso Aberto, com foco em Comunicação Científica e Gestão Editorial. Dedicar-se à promoção de boas práticas editoriais e acessibilidade ao conhecimento científico.





1. Introduction



The Alumni AI Research GPT is a chatbot developed using the GPT-4 model, publicly available on the OpenAI platform. Its primary objective is to support the ethical, transparent, and responsible use of Artificial Intelligence (AI) in academic research. This tool is designed to guide authors, editors, and reviewers in the application of AI across various stages of article submission, peer review, and publication. By facilitating the implementation of AI best practices, it ensures scientific integrity and compliance with established editorial and ethical standards.

This translation incorporates an academic tone suitable for experienced authors, adhering to the principles outlined in academic guidelines related to the ethical use of AI.



About the Alumni AI Research Chatbot

The use of AI in academic research is becoming increasingly common, yet it still presents ethical and transparency challenges. The Alumni AI Research, organized by Alumni Press, aims to bridge this gap by providing continuous and accessible support that ensures compliance with global best practice standards, such as those established by COPE (Committee on Publication Ethics), SciELO (Brazil), and the European Commission.

Improper use of AI can lead to issues such as plagiarism, data fabrication, and editorial decisions without proper human oversight. The tool is structured based on relevant manuals and scientific articles, and is supervised by expert researchers, ensuring that the guidance strictly adheres to the latest ethical guidelines.

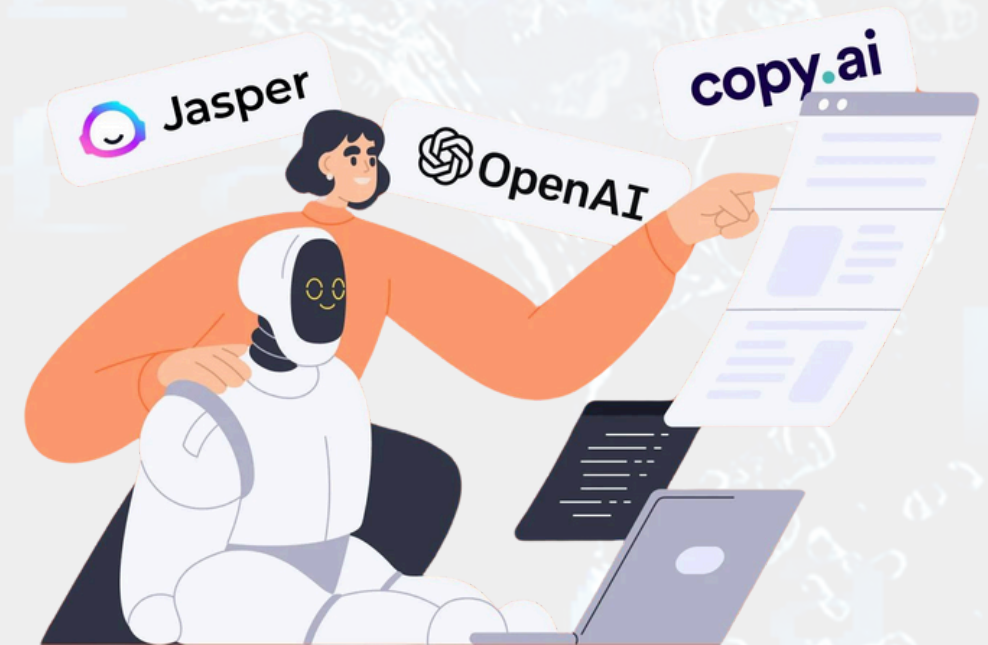
Alumni AI Research also follows the Living Guidelines on the Responsible Use of Generative AI in Research, developed by the European Commission, and promotes best practices for the use of AI at all stages of research.

Transparency in the Use of AI

It is essential that the use of AI be clearly indicated in all parts of the work where it has been employed. Alumni AI Research guides users to accurately specify the areas of the work where AI was applied, clearly distinguishing between the following uses:

- **Literature review:** If AI was used to assist in the search and analysis of references and literature.
- **Text composition:** If AI helped in drafting paragraphs, structuring ideas, or generating content.
- **Grammar and style correction:** If AI was used to improve text clarity, correct grammatical errors, or adjust writing style.

Each use of AI must be explicitly stated in the manuscript, detailing the contribution of the tool and ensuring that the final work is properly attributed to the human author. This should be done in the methodology section or in a specific paragraph that clarifies the use of AI.





1. Initiating Support:

Access: To access Alumni AI Research, users must first create an account on the OpenAI website. To do this, follow the link: ChatGPT OpenAI - Registration. After registering, proceed with the following steps:

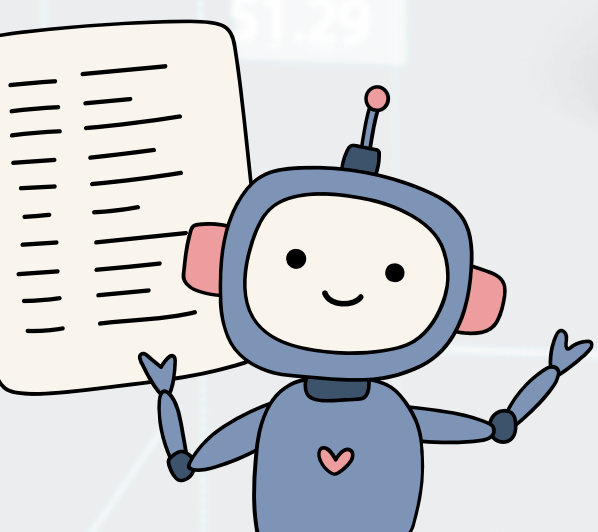
- **Step 1:** On the OpenAI homepage, navigate to the "Explore GPTs" section.
- **Step 2:** Search for "Alumni AI Research" or directly access the chatbot via the following link: (<https://chatgpt.com/g/g-orlfF1odc-alumni-ai-research>).
- **Step 3:** After using the chatbot, please leave a review to help improve the service.

When accessing Alumni AI Research, the chatbot interface will prompt the user to select their role in the publication process:

- a) Author
- b) Editor
- c) Review



Objective: To provide personalized assistance, tailored to the specific roles of each user in the academic publishing cycle.



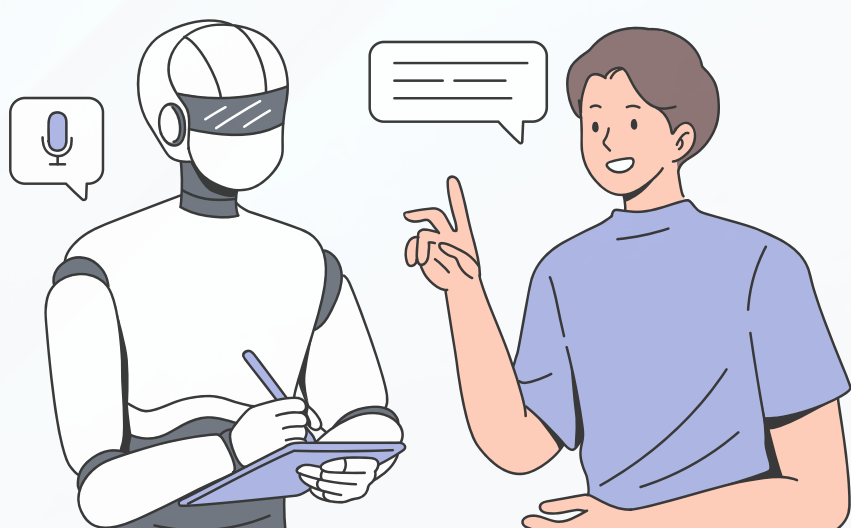
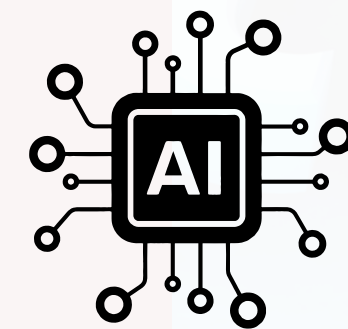
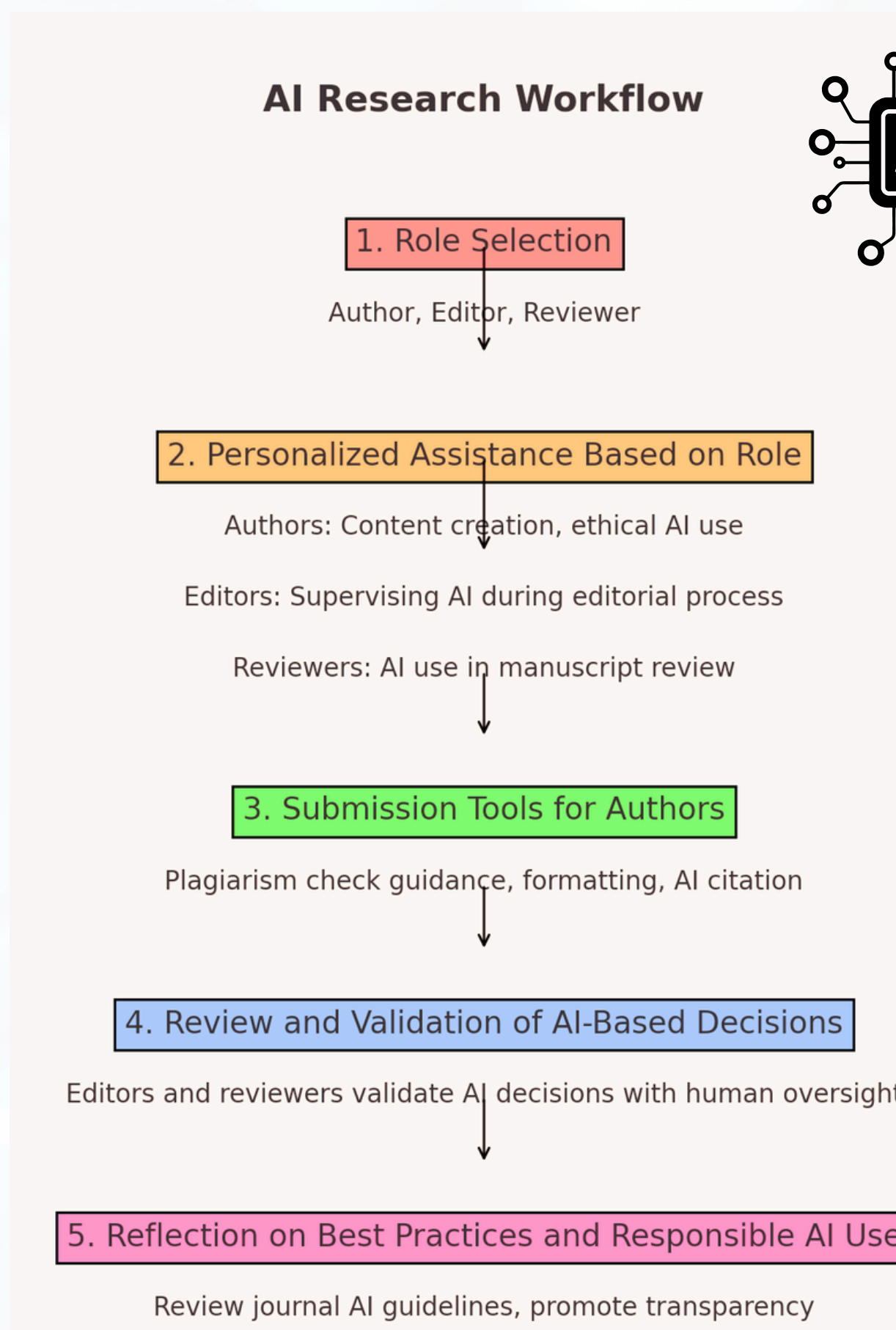
2. Role Selection:

Depending on the selected role, Alumni AI Research adjusts its responses and guidance to meet the specific needs of the user, whether they are an author, editor, or reviewer.

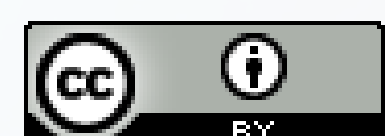
- **Authors:** Support focused on content creation and the ethical use of AI during the academic writing process.
- **Editors:** Guidance on overseeing the use of AI throughout the editorial process, from screening to manuscript acceptance.
- **Reviewers:** Technical and ethical assistance for reviewers using AI in manuscript analysis and the peer review process.

Objective: To tailor support according to the user's role, providing suitable solutions for the different responsibilities within the publication process.

Flowchart 1 is part of the tutorial for understanding AI adoption in research. It aids in visualizing the key stages and ethical considerations, such as transparency, human validation, and data protection. By mapping each step, the flowchart facilitates a clear understanding of the impacts and responsibilities involved in the use of AI in the academic context.



Source: Authors (2024).



DOI: <https://doi.org/10.37497/rev.artif.intell.educ.v5i00.33>



3. Queries for Authors:

Authors can seek support on a range of topics, including:

- **Use of AI in Writing:** Alumni AI Research provides guidance on how to use AI tools to assist in manuscript writing without compromising originality or the integrity of the work.
- **Citing AI:** Detailed guidance on how to properly cite AI tools used in the production of the article. The use of AI must always be mentioned in the manuscript, specifying how the tool was employed (e.g., grammar checking, data analysis).
- **Submission Guidelines:** Information on how to ensure the manuscript meets the journal's submission standards, including formatting, references, and transparency policies regarding AI usage.

Objective: To assist authors in using AI ethically and transparently, ensuring that the manuscript complies with the journal's editorial and scientific guidelines.

4. Queries for Reviewers:

Reviewers can use Alumni AI Research for support on issues related to AI usage in manuscript review:

- **Ethical Review of AI:** Alumni AI Research guides reviewers on how to review manuscripts that use AI, ensuring that authors properly disclose the use of such tools and adhere to ethical standards.
- **Use of AI in Review:** Tips on how to use AI to check for plagiarism, analyze data, and review writing efficiently while maintaining human oversight. AI can be used to review technical aspects, but the final analysis should be conducted by the reviewer, ensuring critical and ethical judgment.

Objective: To provide reviewers with the necessary tools to ensure that the use of AI by authors is ethical and supervised, and that critical review is not compromised.

5. Queries for Editors:

Editors can consult Alumni AI Research for detailed guidance on the use of AI in the editorial process:

- **AI Supervision in the Editorial Process:** Alumni AI Research provides guidance to editors on how to properly supervise AI use during manuscript screening and editorial decision-making, ensuring that all critical decisions are validated by human editors.
- **Transparency in AI Usage:** The chatbot offers recommendations on how to ensure that AI use is transparent at all stages of the submission and review process. Editors are advised to require clear statements from authors about the use of AI.
- **Responsible Editorial Decisions:** Editors receive guidance on how to ensure that AI-assisted editorial decisions are always validated by human supervisors, ensuring that final responsibility rests with the editors.

Objective: To assist editors in implementing ethical and efficient editorial practices using AI, with continuous human oversight and ensuring compliance with journal guidelines.



6. Submission Tools:

Alumni AI Research provides valuable guidance to help authors submit their manuscripts properly and ethically:

- **Plagiarism Detection by AI (Guidance):** Alumni AI Research does not conduct plagiarism checks but provides advice on the correct use of plagiarism detection tools, explaining how to avoid issues such as inadvertent plagiarism or data fabrication.
- **Tip:** Be sure to review all AI-generated content to avoid the misuse of third-party information, always citing sources appropriately.
- **Formatting Suggestions:** Guidance on how to format the manuscript according to the journal's editorial guidelines, especially regarding the ethical and transparent use of AI.
- **Tip:** Check if the journal has a clear editorial policy on AI usage in research. If no policy is defined, inform the editor about the use of AI in your manuscript to promote transparency.

Objective: To assist authors in submitting manuscripts in accordance with editorial policies, ensuring an efficient and ethical submission process.

7. Review and Validation of AI-Based Decisions:

Editors and reviewers can access Alumni AI Research for guidance on validating AI-assisted decisions:

- **Human Oversight in Decisions:** The chatbot advises editors to ensure that all AI-assisted editorial decisions are reviewed and validated by human supervisors, minimizing the risk of automated errors and biases.
- **Tip:** AI tools can be used to verify technical aspects of the manuscript, but the final responsibility always lies with the editor.
- **Review of AI Outcomes:** Alumni AI Research recommends that editors and reviewers manually verify all AI-generated outcomes, ensuring that the review process is accurate and ethical.

Objective: To ensure that all AI-assisted editorial decisions are conducted ethically, transparently, and under the supervision of human editors and reviewers.

8. Conclusion and Reflection:

After each interaction, Alumni AI Research encourages users to reflect on the best practices adopted during the use of AI.

- **Reflection on Best Practices:** The chatbot invites users to review the recommended practices throughout the manuscript creation and review process, encouraging the continuous application of best practices.
- **Tip:** Always review the journal's AI usage guidelines before submitting or reviewing a manuscript.
- **Responsible Use of AI:** Alumni AI Research promotes the responsible and transparent use of AI in academic publications, reinforcing the importance of ethical practices at every stage.

Objective: To emphasize the importance of scientific integrity and promote the responsible and ethical use of AI at all levels of the publication cycle.



REFERENCES

Alumni AI Pesquisa. (2024). GPT-4 customizado para orientação ética e responsável no uso de IA em pesquisas acadêmicas. OpenAI. Disponível em https://platform.openai.com/

COPE. (2021). Committee on Publication Ethics guidelines. Recuperado de <https://publicationethics.org/resources/guidelines>

European Commission. (2023). Living guidelines on the responsible use of generative AI in research. European Commission. https://research-and-innovation.ec.europa.eu/document/download/2b6cf7e5-36ac-41cb-aab5-0d32050143dc_en?filename=ec_rtd_ai_guidelines.pdf

Hosseini, K., Rezaei, R., & Rahimi, M. (2023). The ethics of disclosing the use of artificial intelligence tools in writing scholarly manuscripts. *Science and Engineering Ethics*, 29(2), 345-362. <https://doi.org/10.1007/s11948-023-00491-0>

Limongi, R. (2024). The use of artificial intelligence in scientific research with integrity and ethics. *Review of Artificial Intelligence in Education*, 5(00), e22. <https://doi.org/10.37497/rev.artif.intell.educ.v5i00.22>

SciELO. (2023). Guia de uso de ferramentas de IA na pesquisa. São Paulo: SciELO. Disponível em <https://www.scielo.org>

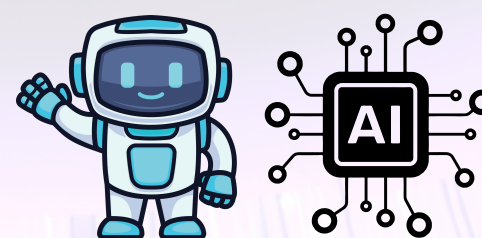
Texas Tech University Libraries. (2023). AI tools: Artificial intelligence tools for detection, research and writing. Recuperado de <https://guides.library.ttu.edu/artificialintelligencetools/aitools>

UNESCO. (2023). Recommendation on the ethics of artificial intelligence. Recuperado de <https://unesdoc.unesco.org/ark:/48223/pf0000377897>

Zielinski, C., Winker, M. A., Aggarwal, R., Ferris, L. E., Heinemann, M., & Lapeña, J. F. (2023). Chatbots, generative AI, and scholarly manuscripts: WAME recommendations on chatbots and generative artificial intelligence in relation to scholarly publications. *Current Medical Research and Opinion*, 40(1), 11–13. <https://doi.org/10.1080/03007995.2023.2286102>

Acknowledgments:

We would like to express our profound gratitude to Prof. Dr. Renata Spers (University of São Paulo and PROFUTURO), Prof. Dr. Manuel David Masseno (Polytechnic Institute of Beja, Portugal), and the team at ALUMNI IN Press for their invaluable academic supervision and guidance during the development of this tutorial. Their contributions were essential in ensuring the scientific rigor and quality of the recommendations presented here.



Acknowledgment of AI Assistance:

The writing and revision of this article were supported by an artificial intelligence tool, utilizing the capabilities of the September 10, 2024 version of ChatGPT. This tool played a key role in refining the narrative, correcting inaccuracies, and ensuring the integrity of the content presented. We acknowledge the significant support provided by this technology in enhancing the quality and accuracy of our tutorial.

